

Glass DC Nebulizers

SeaSpray

1mL/min uptake	A22-1-USS1
400µL/min uptake	A22-1-USS04

MicroMist

400µL/min uptake	A22-1-UM04
200µL/min uptake	A22-1-UM02
100µL/min uptake	A22-1-UM01
50µL/min uptake	A22-1-UM005



DC Nebulizers for HF

OpalMist

400µL/min uptake	A22-1-PFA04
200µL/min uptake	A22-1-PFA02
100µL/min uptake	A22-1-PFA01
50µL/min uptake	A22-1-PFA005



IsoMist XR

Programmable Temperature Cyclonic Spray Chamber

Glass spray chamber	KT-1096-XR
Quartz spray chamber	KT-1096Q-XR
PFA spray chamber	KT-1096P-XR
Twinnabar spray chamber	KT-1096T-XR



Spray Chambers

Twister

50mL Cyclonic (Aux. Port)	20-809-3594HE
---------------------------	---------------

Twister

50mL Cyclonic (2.4mm Aux. Port) Inline Screw Mount	20-809-3841HE
--	---------------

Twister

50mL Cyclonic (2.4mm Aux. Port) 90deg Screw Mount	20-809-3854HE
---	---------------

Twister

50mL Cyclonic with Screw Mount	20-809-3892HE
--------------------------------	---------------

Spray Chambers

Twinnabar

20mL Cyclonic	20-809-3650HE
---------------	---------------



Cinnabar

20mL Cyclonic	20-809-3709HE
---------------	---------------



Spray Chambers for HF

Tracey PFA44

44mL Cyclonic	20-809-3713
---------------	-------------



Torches

D-Torch

30-807-0540

Comprises:

Base and Inner Tube	31-808-2847
Quartz Outer Tube	31-808-2848
Retaining Ring	31-808-2818



D-Torch for HF

30-808-2937

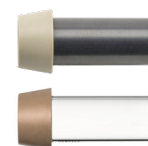
Comprises:

Base and Inner Tube	31-808-2847
Ceramic Outer Tube	31-808-2849
Retaining Ring	31-808-2818



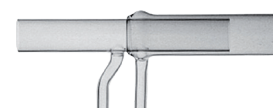
D-Torch Options:

Quartz Outer Tube	31-808-2848
Ceramic Outer Tube	31-808-2849



Quartz Torch

Standard Quartz Torch	30-808-8107
High Efficiency Quartz Torch	31-808-2784



Torches

Quartz Injectors (non DRC)

Tapered Quartz Injector 1.0mm	31-808-0370
Tapered Quartz Injector 1.2mm	31-808-0789
Tapered Quartz Injector 1.5mm	31-807-0006
Tapered Quartz Injector 1.8mm	31-807-0005
Tapered Quartz Injector 2.0mm	31-807-0004

These injectors are compatible with both D-Torch and standard torch. They are suitable for torch adaptor 31-808-2825.



Quartz Injectors (DRC Versions)

Tapered Quartz Injector with Ball Joint, 0.85mm	31-808-3125
Tapered Quartz Injector with Ball Joint, 1.5mm	31-808-0851
Tapered Quartz Injector with Ball Joint, 2.0mm	31-808-0806
Tapered Quartz Injector with Ball Joint, 2.5mm	31-808-3463

These injectors are compatible with both D-Torch and standard torch. They are suitable for torch adaptor 31-808-2824.



HF Resistant Injectors

Tapered Alumina Injector 1.5mm	31-807-0044
Tapered Alumina Injector 1.8mm	31-807-0045
Tapered Alumina Injector 2.0mm	31-807-0060
Sapphire Injector 2.0mm	31-808-2803
Platinum Injector 2.0mm	31-808-2972

These injectors are compatible with both D-Torch and standard torch. They are suitable for torch adaptor 31-808-2825.



Torch Adaptor

Cassette Mount Adaptor for Ball Joint Injector	31-808-2824
--	-------------

This adaptor is suitable for injectors with a ball joint.



Torch Adaptor

PFA Cassette Mount Adaptor	31-808-2825
----------------------------	-------------

This adaptor is suitable for injectors without a ball joint.



Cones

Sampler Cones

Nickel Sampler	PE3011-Ni
Aluminium Sampler	PE3011-Al
Platinum Sampler	PE3013-Pt



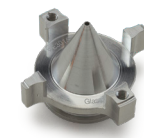
Platinum Sampler Boron free	PE3013-Pt-BF
-----------------------------	--------------

Skimmer Cones

Nickel Skimmer	PE3012-Ni
Aluminium Skimmer	PE3012-Al
Platinum Skimmer	PE3014-Pt



Platinum Skimmer Boron free	PE3014-Pt-BF
Hyper Skimmer	PE3015-Al



O-ring for NexION Hyper Skimmer Cone (pack of 5)	PE5115
--	--------

Screw for NexION Hyper Skimmer Cone (pack of 2)	PE5116
---	--------

ConeGuard Thread Protectors

Sampler Cone Guard For NexION 300/350	70-803-1024
---------------------------------------	-------------



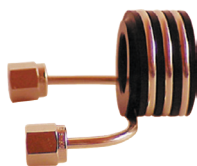
Skimmer Cone Guard For NexION 300/350	70-803-1026
---------------------------------------	-------------



Gasket for Sampler Cone	PE5111
-------------------------	--------

RF Coils

Copper 70-900-2006C



RF Coil Installation Kit 70-900-2006T



Common Accessories

Elegra Argon Humidifier

Elegra Dual Two-channel Argon Humidifier 70-803-1274



Gaurdian In-Line Filters

Guardian in-line non-return gas filter 70-803-1362

Guardian in-line sample filter 70-803-1108

Fitting only connects to 1.3mm and 1.6mm Autosampler Tubing



Trident Internal Standard Kit

Standard Kit 60-808-1185

Standard Kit for HF solutions 60-808-1150



Autosampler Probes

(See page 12 for complete list of probes)

Suitable for Cetac ASX-520

Polyimide sheathed Autosampler Probe 0.5mm ID 60-808-1186L

PTFE Encapsulated Carbon Fibre Probe 0.5mm ID 70-803-0784

PTFE Encapsulated Carbon Fibre Probe 0.75mm ID 70-803-1443

PTFE Encapsulated Carbon Fibre Probe 1.0mm ID 70-803-0793

Suitable for PE S10 or AS93+

PTFE Encapsulated Carbon Fibre Probe 0.25mm ID 70-803-1071

PTFE Encapsulated Carbon Fibre Probe 0.5mm ID 70-803-1440

PTFE Encapsulated Carbon Fibre Probe 1.0mm ID 70-803-0816

